

FUNCTION SWITCH M3 SHOWN IN No 1 POSITION

1. PHONO LOW - TAPE LOW
2. PHONO HI
3. TUNER
4. AUX-TAPE HI

MODE SWITCH M2 SHOWN IN No 1 POSITION

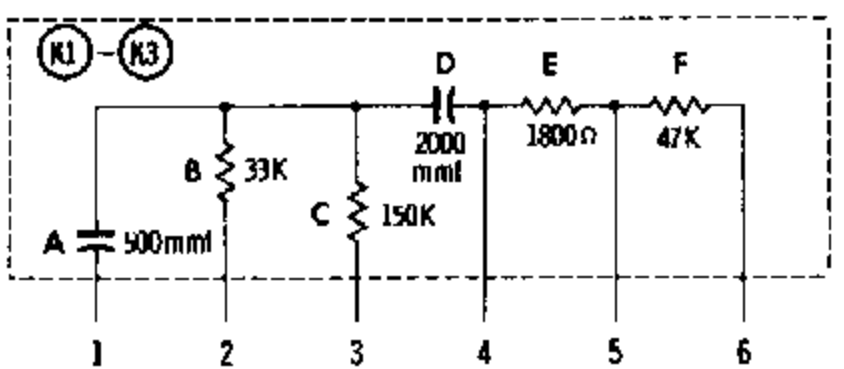
1. REVERSE
2. STEREO
3. MONOPHONIC
4. RIGHT
5. LEFT

● SEE PARTS LIST FOR ALTERNATE VALUE OR APPLICATION
DC COIL RESISTANCE VALUES UNDER ONE OHM NOT SHOWN ON SCHEMATIC DIAGRAM

RESISTANCE READINGS

ITEM	TUBE	Pin 1	Pin 2	Pin 3	Pin 4	Pin 5	Pin 6	Pin 7	Pin 8	Pin 9
V1	ECC83 12AX7	↑490K	70K	180Ω	205Ω	205Ω	↑490K	70K	180Ω	205Ω
V2	ECC82 12AU7	↑140K	3.3meg	0Ω	205Ω	205Ω	↑140K	3.3meg	0Ω	205Ω
V3	ECC82 12AU7	↑60K	0Ω	1200Ω	205Ω	205Ω	60K	0Ω	1200Ω	205Ω
V4	ECC83 12AX7	↑190K	↑10meg	150K	205Ω	205Ω	↑150K	0Ω	680Ω	205Ω
V5	EL84 6BQ5	TP	470K	180Ω	205Ω	205Ω	NC	↑170Ω	TP	↑1000Ω
V6	EL84 6BQ5	TP	470K	180Ω	205Ω	205Ω	NC	↑215Ω	TP	↑1000Ω
V7	ECC83 12AX7	↑190K	↑10meg	150K	205Ω	205Ω	↑150K	0Ω	680Ω	205Ω
V8	EL84 6BQ5	TP	470K	180Ω	205Ω	205Ω	NC	↑170Ω	TP	↑1000Ω
V9	EL84 6BQ5	TP	470K	180Ω	205Ω	205Ω	NC	↑215Ω	NC	↑1000Ω
V10	6Z54 5AR4	TP	↑	NC	40Ω	TP	40Ω	TP	↑	

↑ THIS READING WILL VARY DEPENDING UPON THE CONDITION OF THE ELECTROLYTIC IN THE CIRCUIT.
↑ MEASURED FROM PIN 8 OF V10.
↑ MEASURED FROM PIN 3 OF V4.
↑ MEASURED FROM PIN 3 OF V7.
NC NO CONNECTION
TP TIE POINT



1. DC voltage measurements taken with vacuum tube voltmeter; AC voltages measured at 1000 ohms per volt.
2. Socket connections are shown as bottom views.

